

# Mapping of Urban Tanks / Rivers and it's Changes Srikalahasti Urban Local Body, Tirupati District, Andhra Pradesh



**Source:**

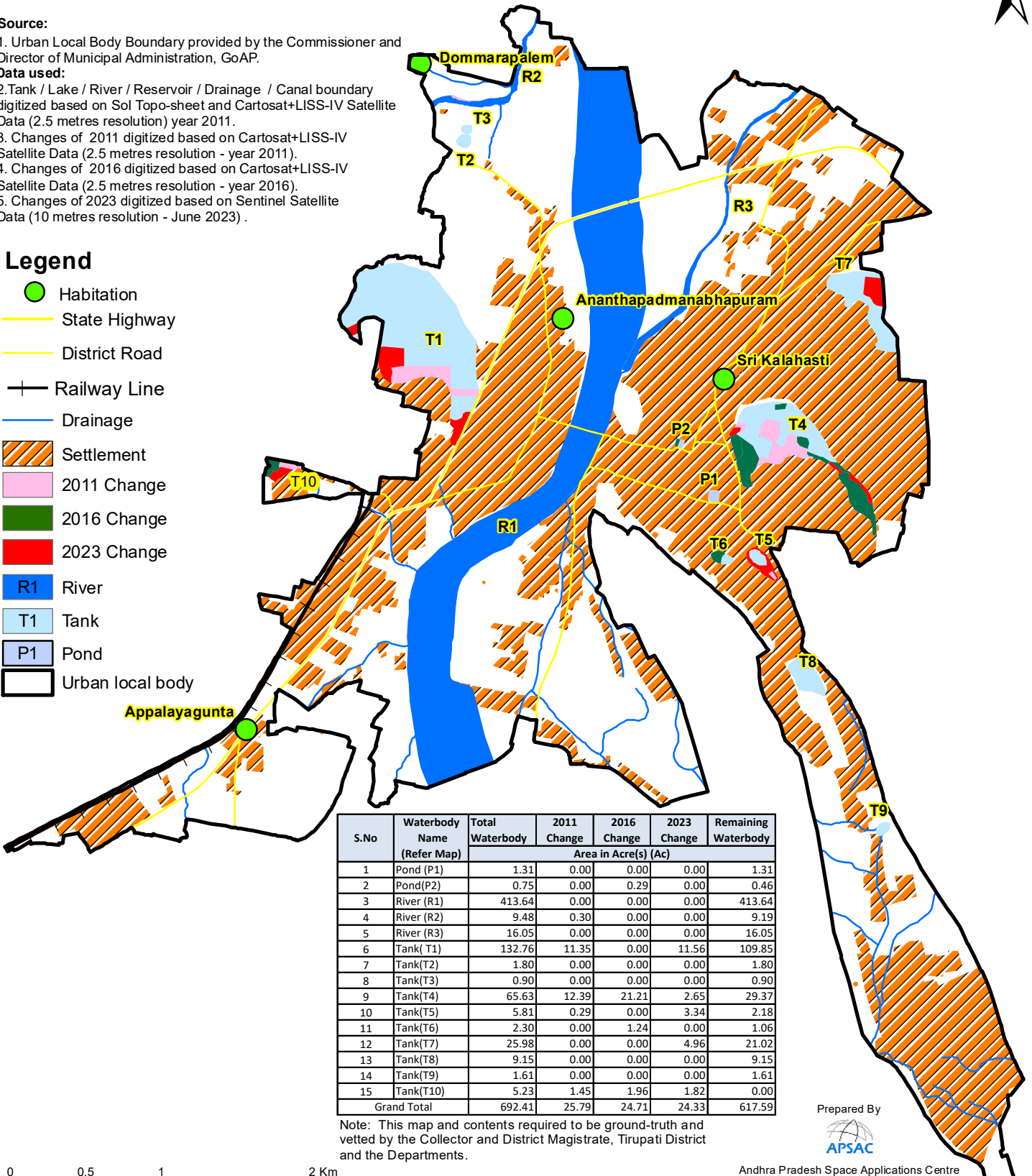
1. Urban Local Body Boundary provided by the Commissioner and Director of Municipal Administration, GoAP.

**Data used:**

- 2. Tank / Lake / River / Reservoir / Drainage / Canal boundary digitized based on Sol Topo-sheet and Cartosat+LISS-IV Satellite Data (2.5 metres resolution) year 2011.
- 3. Changes of 2011 digitized based on Cartosat+LISS-IV Satellite Data (2.5 metres resolution - year 2011).
- 4. Changes of 2016 digitized based on Cartosat+LISS-IV Satellite Data (2.5 metres resolution - year 2016).
- 5. Changes of 2023 digitized based on Sentinel Satellite Data (10 metres resolution - June 2023) .

**Legend**

- Habitation
- State Highway
- District Road
- Railway Line
- Drainage
- Settlement
- 2011 Change
- 2016 Change
- 2023 Change
- R1 River
- T1 Tank
- P1 Pond
- Urban local body



S.No	Waterbody Name (Refer Map)	Total Waterbody	2011	2016	2023	Remaining Waterbody
			Change	Change	Change	
Area in Acre(s) (Ac)						
1	Pond (P1)	1.31	0.00	0.00	0.00	1.31
2	Pond(P2)	0.75	0.00	0.29	0.00	0.46
3	River (R1)	413.64	0.00	0.00	0.00	413.64
4	River (R2)	9.48	0.30	0.00	0.00	9.19
5	River (R3)	16.05	0.00	0.00	0.00	16.05
6	Tank( T1)	132.76	11.35	0.00	11.56	109.85
7	Tank(T2)	1.80	0.00	0.00	0.00	1.80
8	Tank(T3)	0.90	0.00	0.00	0.00	0.90
9	Tank(T4)	65.63	12.39	21.21	2.65	29.37
10	Tank(T5)	5.81	0.29	0.00	3.34	2.18
11	Tank(T6)	2.30	0.00	1.24	0.00	1.06
12	Tank(T7)	25.98	0.00	0.00	4.96	21.02
13	Tank(T8)	9.15	0.00	0.00	0.00	9.15
14	Tank(T9)	1.61	0.00	0.00	0.00	1.61
15	Tank(T10)	5.23	1.45	1.96	1.82	0.00
Grand Total		692.41	25.79	24.71	24.33	617.59

Note: This map and contents required to be ground-truth and vetted by the Collector and District Magistrate, Tirupati District and the Departments.

Prepared By



Andhra Pradesh Space Applications Centre  
ITE & C Department, Govt., of A.P.  
Vijayawada - 520010

